

Sanlam Employee Benefits

**Sanlam Unity Umbrella Fund  
monthly investment fact sheets**

May 2018

Insurance

Financial Planning

Retirement

Investments

Wealth

# Sanlam Unity Umbrella Fund



## Mandate description

Sanlam Unity Umbrella Fund (known as "The Fund") aims to achieve good investment growth at an acceptable level of risk. The Fund is designed for members with low tolerance for negative annualised returns and consists of an allocation to a volatility protection strategy and a low cost tracker solution.

This Fund currently utilises two underlying investment portfolios in order to achieve their objectives. Members invested in The Fund's assets are split as follows:

- 75% Sanlam Monthly Bonus and
- 25% Satrix (SWIX) Balanced Index Tracker

The approximate 75 / 25 investment split between the Sanlam Monthly Bonus Fund and the SATRIX (SWIX) Balanced Portfolio positions the Fund well to satisfy members' reasonable long-term benefit expectations, by providing relatively stable yet market-related exposure to the investment markets. The (near) uncorrelated returns of the two separate portfolios add to the reduction of risk (specific risk) through diversification.

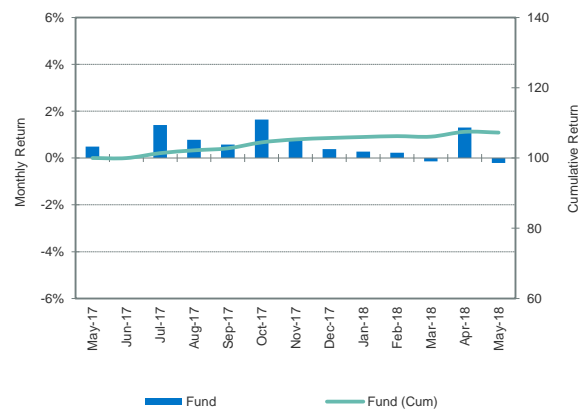
## Asset allocation

Asset Allocation as at 31 May 2018		
	Rand	%
<b>Satrix (SWIX) Balanced Tracker Fund</b>	R 128 403 332	23,9%
<b>Sanlam Monthly Bonus Fund</b>	R 408 319 205	76,1%
<b>Total Fund</b>	<b>R 536 722 537</b>	<b>100,0%</b>

## Fund performance

Phase	1 month	3 months	1 year	3 years	5 years
<b>Sanlam Monthly Bonus</b>	0,5%	1,7%	7,8%	8,3%	11,5%
<b>SATRIX (SWIX) Balanced</b>	-2,6%	-1,5%	4,9%	6,1%	9,8%
<b>Total Fund</b>	-0,2%	0,9%	7,2%	7,8%	11,1%

## Total monthly- and cumulative returns



Note: Performance figures are gross of investment management fees, but are net of any performance fees (if applicable). For portfolios in the Smoothed Bonus Range, the returns are gross of investment management fees, but are net of any guarantee premiums. Performance figures for periods greater than 12 months are annualised. All data shown is at the month-end, unless specifically indicated differently. Changes in currency rates of exchange may cause the value of your investment to fluctuate. Past performance is not necessarily a guide to the future returns. The value of investments and the income from them may increase or decrease and are not guaranteed. You may not get back the amount you invest. The product information sheets are prepared for the SANLAM UMBRELLA FUND by its investment consultants. The product information sheets are prepared in good faith and the information, data and opinions contained in the product information sheets are based on source information considered reliable. However, no guarantee, explicit or otherwise are provided that the information and data contained therein are correct and comprehensive. The SANLAM UMBRELLA FUND and the investment consultants cannot be held liable for any loss, expense and/or damage following from the use of the product information sheets.

# Satrix (SWIX) Balanced Tracker Fund



**Period Ending** 31-May-18  
**Fund Size** R 1 438 million  
**Inception Date** Sep-08

## Fund objective

The portfolio invests in tracker equity and bond indices, locally and abroad, and also cash to create a moderate risk balanced portfolio which is expected to perform close to the underlying indices without incurring active management costs. Scrip lending may be performed on the passive equity component.

## Risk profile

This fund has a moderate-aggressive risk profile.

## Fees

### South African assets:

0,38% per annum

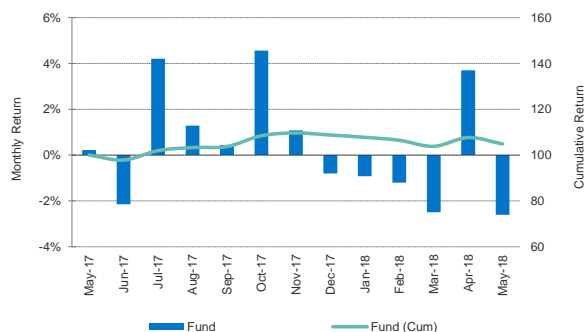
### International assets:

0,30% per annum on international equities, and

0,25% per annum on international interest bearing assets

The domestic equity component tracks the SWIX Index. Script lending is permitted in respect of this basket of shares, and the resultant income (net of associated costs) is periodically rebated to clients participating in this portfolio, and effectively serves to reduce the quoted management fee.

## Monthly and cumulative returns



## Fund performance (%)

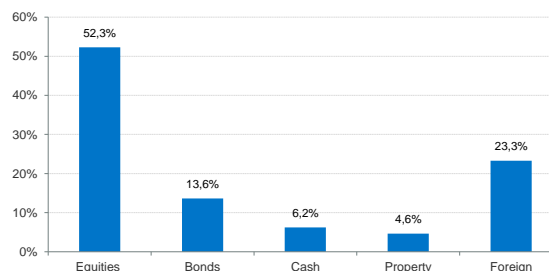
	Fund	Benchmark
<b>1 Month</b>	-2,6%	-2,6%
<b>3 Months</b>	-1,5%	-1,5%
<b>6 Months</b>	-4,4%	-4,4%
<b>1 Year</b>	4,9%	5,0%
<b>3 Year</b>	6,1%	6,0%
<b>5 Year</b>	9,8%	9,9%

## Top 10 equity holdings (% of Equities)

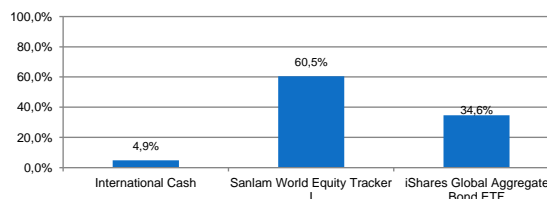
Share Name	% of Equities
Naspers N	20,3%
Stanbank	4,1%
Sasol	4,0%
FirstRand / RMBH	3,8%
MTN Group	3,2%
Groupnt	3,1%
Anglos	2,7%
BTI Group	2,5%
Redefine Properties	2,3%
Sanlam	2,0%

**Benchmark** 52,5% Shareholder Weighted Index (SWIX)  
 5,0% FTSE/JSE SAPY Index  
 13,0% ALBI (BEASSA All Bond Index)  
 14,0% MSCI (Developed Markets) World Index  
 8,0% Float adj Barclays Global Aggr Bond Index Unhedged  
 7,5% STeFI

## Asset class breakdown



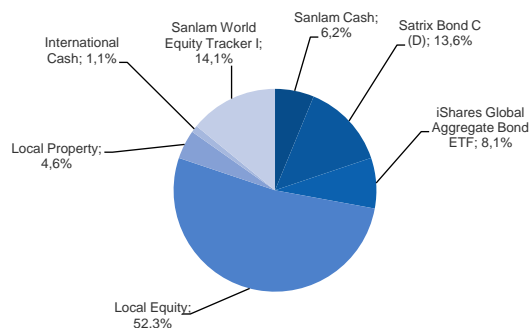
## Foreign split



## Equity sectoral exposure (%)

	Fund	Benchmark
<b>Financials</b>	30,2%	29,7%
<b>Resources</b>	15,4%	15,4%
<b>Industrials</b>	54,4%	54,9%

## Fund manager breakdown



**Note:** Performance figures are gross of investment management fees, but are net of any performance fees (if applicable). For portfolios in the Smoothed Bonus Range, the returns are gross of investment management fees, but are net of any guarantee premiums. Performance figures for periods greater than 12 months are annualised. All data shown is at the month-end, unless specifically indicated differently. Changes in currency rates of exchange may cause the value of your investment to fluctuate. Past performance is not necessarily a guide to the future returns. The value of investments and the income from them may increase or decrease and are not guaranteed. You may not get back the amount you invest. The product information sheets are prepared for the SANLAM UMBRELLA FUND by its investment consultants. The product information sheets are prepared in good faith and the information, data and opinions contained in the product information sheets are based on source information considered reliable. However, no guarantee, explicit or otherwise is provided that the information and data contained therein are correct and comprehensive. The SANLAM UMBRELLA FUND and the investment consultants cannot be held liable for any loss, expense and/or damage following from the use of the product information sheets.

# Sanlam Monthly Bonus Fund



**Period Ending** 31-May-18  
**Fund Size (Book Value)** R7 077 million  
**Inception Date** Jul-99

## Fund objective

The Monthly Bonus Fund (MBF) protects investors against short-term volatility by smoothing out investment returns, whilst providing valuable guarantees on benefit payments. The underlying portfolio is mandated with more weight to less risky asset classes than a typical Balanced fund. The Sanlam Monthly Bonus Fund offers 100% capital guarantee and fully vesting bonuses. Fully vesting bonuses are declared monthly in advance.

## Risk profile

This fund has a conservative risk profile.

## Fees

### Investment Management Fees:

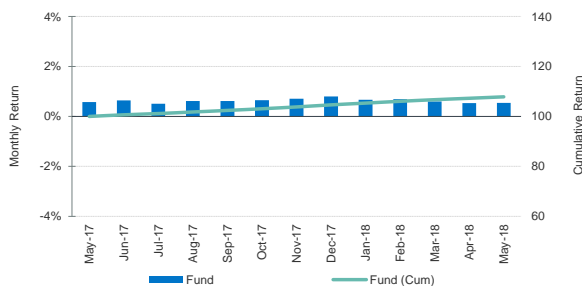
0.425% per annum

### Guarantee Premium:

A guarantee premium of 1.6% per annum

### Annual Performance Linked Fee:

The Investment Manager may be incentivised with performance fees (capped at 0.30% p.a.)



## Fund bonuses (%)

	Fund (gross of fees)
<b>1 Month</b>	0,5%
<b>3 Months</b>	1,7%
<b>6 Months</b>	3,9%
<b>1 Year</b>	7,8%
<b>3 Years</b>	8,3%
<b>5 Years</b>	11,5%

## Top 10 equity holdings (% of Equities)

Share Name	% of Equities
Naspers N	16,5%
Sasol	5,4%
Stanbank	5,3%
BTI Group	4,7%
FirstRand / RMBH	4,6%
MTN Group	4,0%
Old Mutual	3,4%
Anglos	3,2%
Barclays	2,9%
Aspen	2,0%

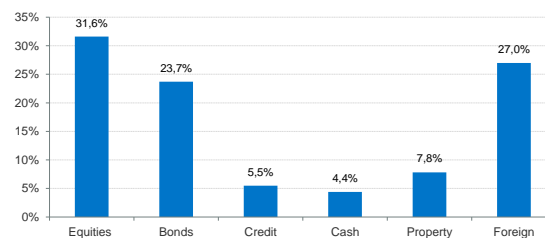
## Benchmark

16,0% \*SWIX (Shareholder Weighted Index)  
 16,0% \*Capped SWIX (Shareholder Weighted Index)  
 25,5% BEASSA Total Return All Bond Index  
 1,0% STeFI + 2%  
 2,0% IGOVI  
 17,5% \*\*MSCI World Index (Dev. Markets)  
 5,0% Barclays Global Aggregate Index  
 2,5% US 3 month London InterBank Offered Rate (LIBOR) +2.5% (net of fees)  
 8,0% STeFI Index  
 6,5% BEASSA 7-12 years TRI plus 1.0% p.a.

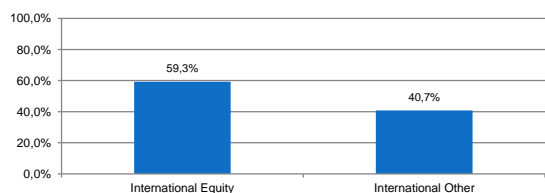
\* Transitioning from 100% SWIX to above benchmark by June 2018

\*\* Transitioning from 12.5% foreign equity to 17.5% by June 2018

## Asset class breakdown



## Foreign Split



## Equity sectoral exposure (%)

	Fund
<b>Financials</b>	23,7%
<b>Resources</b>	13,5%
<b>Industrials</b>	62,8%

## Risk analysis

(based on the last 3 years' monthly returns)

<b>% of negative months over the last 3 years</b>	0,0%
<b>Average capital loss in one month</b>	0,0%
<b>Downside risk *</b>	0,6%

\* Downside risk is measured as the standard deviation of the underperformance of the portfolio relative to CPI

## Funding Level

June 2018: 97.56% funded

Note: Performance figures are gross of investment management fees, but are net of any performance fees (if applicable). For portfolios in the Smoothed Bonus Range, the returns are gross of investment management fees, but are net of any guarantee premiums. Performance figures for periods greater than 12 months are annualised. All data shown is at the month-end, unless specifically indicated differently. Changes in currency rates of exchange may cause the value of your investment to fluctuate. Past performance is not necessarily a guide to the future returns. The value of investments and the income from them may increase or decrease and are not guaranteed. You may not get back the amount you invest. The product information sheets are prepared for the SANLAM UMBRELLA FUND by its investment consultants. The product information sheets are prepared in good faith and the information, data and opinions contained in the product information sheets are based on source information considered reliable. However, no guarantee, explicit or otherwise are provided that the information and data contained therein are correct and comprehensive. The SANLAM UMBRELLA FUND and the investment consultants cannot be held liable for any loss, expense and/or damage following from the use of the product information sheets.